

Immunofluorescence

All-in-One Chambers for
Cultivating – Fixing –
Staining – Imaging

✓ Fast and Easy Sample Preparation

All-in-one chamber simplifies your immunofluorescence staining protocol

✓ Homogeneous Cell Distribution

Channel slide geometry produces an even distribution of cells

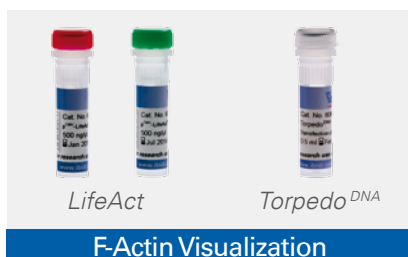
✓ Cost-Effective Experiments

Low amounts of cells and reagents are needed

✓ High-Resolution Imaging

Suitable for wide-field fluorescence, confocal imaging, FRAP – FRET – FLIM, and undisturbed phase contrast

Complementary equipment for immunofluorescence experiments:



Immunofluorescence

All-in-One Chambers for Cultivating – Fixing – Staining – Imaging

Channel Formats

The ibidi channel slides are ideal for using low amounts of reagents. μ -Slides VI^{0.4} are ideal for general immunofluorescence assays, whereas the μ -Slide I^{0.4} Luer enables immunofluorescence staining in low-density cultures and flow experiments.

Open-Well Formats

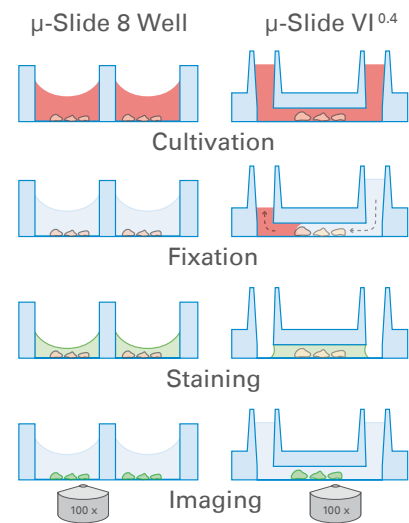
The ibidi μ -Slide 8 Well and the μ -Dish^{35 mm, high} enable standard immunofluorescence protocols without cover slips in an all-in-one chamber. After staining, the sample is observed through the polymer coverslip bottom, using high-resolution microscopy.

Removable Chambers

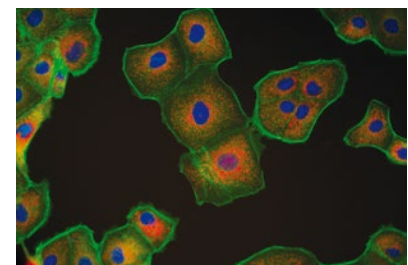
A removable silicon gasket with chambers provides an ideal format for individual cell culture and incubation. The ibidi micro-Insert 4 Well enables the use of extremely low reagent volumes. The removable 3 Well | 8 Well | 12 Well Chambers are ideal for long-term sample storage.

More than **800 publications** demonstrate the advantages of using ibidi products for immunofluorescence assays.






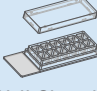
For detailed immunofluorescence protocols, including a how-to video using the μ -Slide VI^{0.4}, go to: www.ibidi.com/applications.



ibidi μ -Slides reduce the number of experimental steps needed in immunofluorescence assays



MDCK cell line cultured in μ -Slide VI^{0.4}

	Channel Formats – All-in-One		Open Well Formats – All-in-One		Removable Chambers	
	 μ -Slide VI ^{0.4}	 μ -Slide I ^{0.4} Luer	 μ -Slide 8 Well	 μ -Dish ^{35 mm, high}	 Micro-Insert, 4 Well	 8 Well Chamber, removable
Volume per well or channel	25 μ l	100 μ l	300 μ l	2 ml	10 μ l	400 μ l
Growth area per well or channel	0.6 cm ²	2.5 cm ²	1.1 cm ²	3.5 cm ²	0.03 cm ²	0.93 cm ²
Number of independent tests	6	1	8	1	4	8
Application examples (IF = Immunofluorescence)	IF, after cell culture and incubation	IF, at low density cultures and flow experiments	IF, after cell culture and incubation	IF, after cell culture and incubation	IF, in very small volumes after culture and incubation	IF, and long-term storage of samples
Catalog number	80606 (ibiTreat)	80176 (ibiTreat)	80826 (ibiTreat)	81156 (ibiTreat)	80406 (ibiTreat)	80841 (glass slide)

FREE SAMPLES: www.ibidi.com/free-samples